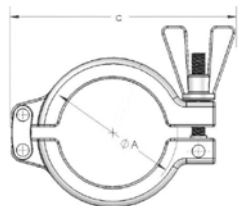


RACCORDS CLAMP SERIE ISO

ISO CLAMP FITTINGS

COLLIERS CLAMP - CLAMP RINGS

13021 - 13022 - 13023



Applications : industrie chimique, pharmaceutique agro-alimentaire

- Double articulation : serrage rapide
- Finition polie

Construction : inox 316 (inox 304 sur demande)

Pression de service jusqu'à 50 bar (selon Ø) à 150°C

Use : food & dairy, pharmaceutical & chemical industries

- Double pin hinge plate : fast clamping union
- Highly polished finish

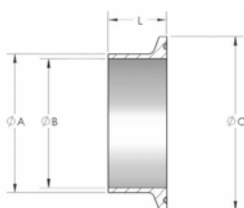
Construction : 316 (304 on request)

Pressure ratings : up to 50 bar (acc. to DN) at 150°C

Type	Micro Clamp		Mini Clamp			Clamp													
Réf.	13021		13022			13023													
DN	8	10	8	10	15	15	20	25	32	40	50	65	80	100	125	150	200	250	300
ISO Ø ext.	13.5	17.2	13.5	17.2	21.3	21.3	26.9	33.7	42.4	48.3	60.3	76.1	88.9	114.3	139.7	168.3	219.1	273.0	323.9
Ø A (mm)	25.4		34.0			50.5			64.0	77.5	91.0	106	130	155	183	233	286	338	338
C (mm)	75.0		85.0			102			123	140	150	165	191	252	280	333	405	463	463
Poids (kg)	0.15		0.17			0.25			0.33	0.38	0.44	0.50	0.60	1.39	1.61	2.25	2.97	3.37	3.37

FERRULES - FERRULES

13001 - 13002 - 13003



Applications : chimie, pharmacie, agro-alimentaire

- Conforme à la norme ISO 1127
- Aucune zone de rétention
- Etat de surface standard : Ra ≤ 0.8 µm
Electro-polissage sur demande (Ra ≤ 0.38 µm)

Construction : inox 316 L

Autres matériaux : inox spéciaux, Hastelloy®, titane...

Use : food & dairy, pharmaceuticals & chemicals

- Conformity to ISO 1127 standard
- No dead zone
- Surface finish : Ra ≤ 0.8 µm
Electro-polishing on request (Ra ≤ 0.38 µm)

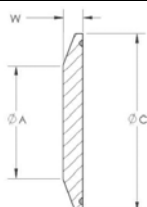
Construction : 316 L

Others : special s. steels, Hastelloy®, titanium...

Type	Micro Clamp		Mini Clamp			Clamp															
Réf.	13001		13002			13003															
DN	8	10	8	10	15	15	20	25	32	32 (*)	40	50	65	80	100	125	150	200	250	300	
Ø A (mm)	13.5	17.2	13.5	17.2	21.3	21.3	26.9	33.7	42.4	42.4	48.3	60.3	76.1	88.9	114.3	139.7	168.3	219.1	273.0	323.9	
Ø B (mm)	10.3	14.0	10.3	14.0	18.1	18.1	23.7	29.7	39.2	38.4	44.3	56.3	72.9	84.9	110.3	135.7	163.1	213.9	267.8	318.7	
Ø C (mm)	25.4		34.0			50.5			64.0	64.0	77.5	91.0	106.0	130.0	155.0	183.0	233.5	286.1	338.5	338.5	
L (mm)	21.5		18.0			21.5			28.0												
Poids (kg)	0.02		0.03			0.08	0.07	0.10	0.11	0.09	0.12	0.14	0.18	0.25	0.37	0.51	0.66	0.93	1.28	1.28	

BOUCHONS - BLANKS

13011 / 012 / 013



Applications : chimie, pharmacie, agro-alimentaire

- Conformité à la norme ISO 1127
- Aucune zone de rétention
- Etat de surface : Ra ≤ 0.8 µm

Construction : inox 316 L

Autres matériaux : inox spéciaux, Hastelloy®, titane...

Use : food & dairy, pharmaceuticals & chemicals

- Conformity to ISO 1127 standard
- No dead zone
- Surface finish : Ra ≤ 0.8 µm

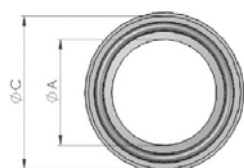
Construction : 316 L

Others : special s. steels, Hastelloy®, titanium...

Type	Micro Clamp		Mini Clamp			Clamp															
Réf.	13011		13012			13013															
DN	08	10	08	10	15	15	20	25	32	32 (*)	40	50	65	80	100	125	150	200	250	300	
Ø A (mm)	12.5		15.5			24.5			39.0	53.5	66.5	81.0	95.0	130	158	206	261	329	329		
Ø C (mm)	25.4		34.0			50.5			64.0	77.5	91.0	106.0	130.0	155.0	183.0	233.5	286.1	338.5	338.5		
W (mm)	5.6		6.0			7.0			9.0			10.0									
Poids (kg)	0.02		0.03			0.08			0.14	0.21	0.30	0.42	0.65	1.31	1.94	3.24	4.92	8.70	8.70		

JOINTS - GASKETS

13101 / 102 / 103 - 13111 / 112 / 113



- Joints clamp EPDM
Couleur noire
Echelle de température : -50°C +150°C

- Joints clamp FKM/PTFE
Enveloppe PTFE - Ame FKM [= Viton®]
Echelle de température : -25°C +250°C

Autres matériaux : silicone, FKM, PTFE, PEEK™, TFM

- EPDM gasket
Black color
Temperature range : -50°C +150°C

- FKM/PTFE gasket
PTFE envelope - FKM [= Viton®] filler
Temperature range : -25°C +250°C

Other materials : silicone, FKM, PTFE, PEEK™, TFM

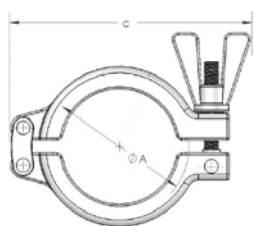
Type	Micro Clamp		Mini Clamp			Clamp														
EPDM	Réf. 13101		Réf. 13102			Réf. 13103														
PTFE / FKM	Réf. 13111		Réf. 13112			Réf. 13113														
DN	8	10	8	10	15	15	20	25	32	32 (*)	40	50	65	80	100	125	150	200	250	300
Ø A (mm)	10.3	14.0	10.3	14.0	18.1	18.1	22.9	29.7	38.4	38.4	44.3	56.3	72.1	84.9	110.3	135.7	163.1	213.9	267.8	318.7
Ø C (mm)	22.0		34.0			50.5			64.0	77.5	91.0	106	130	155	183	233.5	286.1	338.5	338.5	

RACCORDS CLAMP SERIES SMS & BSOD

SMS & BSOD CLAMP FITTINGS

COLLIERS CLAMP - CLAMP RINGS

13025



Applications : chimie, pharmacie, agro-alimentaire

Use : food & dairy, pharmaceuticals & chemicals

- Double articulation : serrage rapide
- Finition polie

- Double pin hinge plate : fast clamping union
- Highly polished finish

Construction : inox 316 (inox 304 sur demande)

Construction : 316 (304 on request)

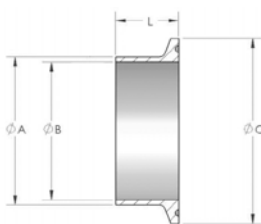
Pression de service jusqu'à 50 bar (selon Ø) à 150°C

Pressure ratings : up to 50 bar (acc. to DN) at 150°C

DN	1/4" - 3/4"	1" - 1-1/2"	2"	2-1/2"	3"	4"
Ø A (mm)	25.4	50.5	64.0	77.5	91.0	119.0
C (mm)	75.0	102.0	123.0	140.0	150.0	185.0
Poids (kg)	0.15	0.25	0.33	0.38	0.44	0.57

FERRULES - FERRULES

13005 - 13006



Applications : chimie, pharmacie, agro-alimentaire
Dimensions de base : SMS 3008 et BSOD (Impérial)

Use : food & dairy, pharmaceuticals & chemicals
Dimensions acc. to SMS 3008 and Imperial (BSOD)

- Aucune zone de rétention
- Etat de surface : Ra ≤ 0.8 µm
Electro-polissage sur demande (Ra ≤ 0.38 µm)

- No dead zone
- Surface finish : Ra ≤ 0.8 µm
Electro-polishing on request (Ra ≤ 0.38 µm)

Construction : inox 316 L

Construction : 316 L

Autres matériaux : inox spéciaux, Hastelloy®, titane...

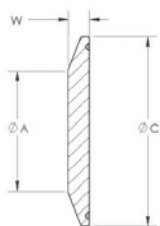
Others : special s. steels, Hastelloy®, titanium...

Réf	13005 [SMS]								13006 [BSOD]								
	1"	1-1/2"	2"	2-1/2"	3"	4"	4" *	1/4"	3/8"	1/2"	3/4"	1"	1"1/2"	2"	2"1/2"	3"	4"
Ø A (mm)	25.0	38.0	51.0	63.5	76.1	101.6	104.0	6.35	9.52	12.70	19.05	25.4	38.1	50.8	63.5	76.2	101.6
Ø B (mm)	22.6	35.6	48.6	60.3	72.9	97.6	100.0	4.57	7.74	9.40	15.75	22.1	34.8	47.5	60.2	72.9	97.38
épaisseur	1.20	1.20	1.20	1.60	1.60	2.0	2.0	0.89	0.89	1.65	1.65	1.65	1.65	1.65	1.65	1.65	2.11
Ø C (mm)	50.5	50.5	64.0	77.5	91.0	119.0	119.0	25.4	25.4	25.4	25.4	50.5	50.5	64.0	77.5	91.0	119.0
L (mm)	21.5	21.5	21.5	21.5	21.5	21.5	28.0 *	28.5	28.5	28.5	28.5	28.5	28.5	28.5	28.5	28.5	28.5
Poids (kg)	0.07	0.05	0.06	0.10	0.12	0.21	0.22 *	0.02	0.02	0.02	0.02	0.08	0.08	0.14	0.21	0.28	0.42

* selon DIN 32676, plus couramment utilisé dans les pays européens

BOUCHONS - BLANKS

13015



Applications : chimie, pharmacie, agro-alimentaire

Use : food & dairy, pharmaceuticals & chemicals

- Aucune zone de rétention
- Etat de surface : Ra ≤ 0.8 µm

- No dead zone
- Surface finish : Ra ≤ 0.8 µm

Construction : inox 316 L

Construction : 316 L

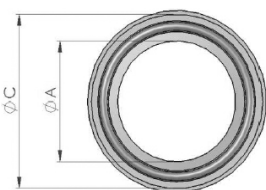
Autres matériaux : inox spéciaux, Hastelloy®, titane...

Others : special s. steels, Hastelloy®, titanium...

DN	1/4" - 3/4"	1" - 1-1/2"	2"	2-1/2"	3"	4"
Ø C (mm)	25.4	50.5	64.0	77.5	91.0	119.0
Ø A (mm)	12.5	24.5	39.0	53.5	66.5	82.0
W (mm)	5.6	7.0	7.0	7.0	7.0	9.0
Poids (kg)	0.02	0.08	0.14	0.21	0.30	0.65

JOINTS - GASKETS

13105 - 13116



- Joints clamp EPDM
Couleur noire
Echelle de température : -50°C +150°C

- EPDM gasket
Black color
Temperature range : -50°C +150°C

- Joints clamp FKM/PTFE
Enveloppe PTFE blanche - âme FKM [=Viton®]
Echelle de température : -25°C +250°C

- FKM/PTFE gasket
PTFE envelope - FKM [=Viton®] filler
Temperature range : -25°C +250°C

Autres matériaux : silicone, FKM, PTFE, PEEK™, TFM

Other materials : silicone, FKM, PTFE, PEEK™, TFM

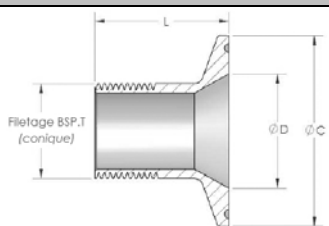
EPDM	Réf. 13105 [SMS]								Réf. 13106 [BSOD]								
	Réf. 13115 [SMS]								Réf. 13116 [BSOD]								
PTFE/FKM	1"	1-1/2"	2"	2-1/2"	3"	4" [101.6]	4" [104]	1/4"	3/8"	1/2"	3/4"	1"	1"1/2"	2"	2"1/2"	3"	4"
Ø A (mm)	22.6	35.6	48.6	60.3	72.1	97.6	100.0	4.57	7.71	9.52	15.87	22.2	34.9	47.6	60.3	73.0	97.6
Ø C (mm)	50.5	50.5	64.0	77.5	91.0	119.0	119.0	22.0*	22.0*	22.0*	22.0*	50.5	50.5	64.0	77.5	91.0	119.0

* Ø ext de la bride de ferrule = 25.4 mm / Ferrule flange size = 25.4 mm

ADAPTATEURS, COLLIERS SPECIAUX, REDUCTIONS
ADAPTORS, SPECIAL CLAMPS, REDUCERS

ADAPTATEURS CLAMP MALES - MALE CLAMP ADAPTORS

13031 - 13032 - 13033



- Raccordement selon profil BSP.T (gaz) (NPT sur demande)
- Construction inox 316 L (usiné dans la barre)
- Rugosité Ra ≤ 0.8 µm

- Connection according to BSP.T thread (NPT on request)
- Manufactured from 316 L bar stock
- Surface finish ≤ 0.8 µm

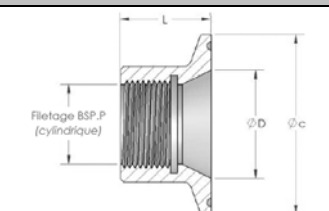
* Ø intérieur contre-ferrule

* Inside Ø mating

TYPE	MICRO CLAMP 13031				MINI CLAMP 13032				CLAMP 13033			
Référence	13031				13032				13033			
Filetage BSP.T	1/4" G	1/2" G	1/4" G	1/2" G	1/4" G	3/8" G	1/2" G	3/4" G	1/2" G	3/4" G	1" G	
Ø C (mm)	25.4	25.4	34.0	34.0	50.5	50.5	50.5	50.5	50.5	50.5	50.5	
Ø D * (mm)	10.0	16.0	10.0	16.0	22.0	22.0	22.0	22.0	35.0	35.0	35.0	
L (mm)	30	32	30	30	30	30	35	35	35	35	35	
Poids (kg)	0.03	0.03	0.05	0.07	0.09	0.10	0.10	0.11	0.09	0.10	0.12	

ADAPTATEURS CLAMP FEMELLES - FEMALE CLAMP ADAPTORS

13043



- Raccordement selon profil BSP.P (gaz) (NPT sur demande)
- Joint interne en PTFE
- Construction inox 316 L (usiné dans la barre)
- Rugosité Ra ≤ 0.8 µm

- Connection according to BSP.P thread (NPT on request)
- PTFE internal seal
- Manufactured from 316 L bar stock
- Surface finish ≤ 0.8 µm

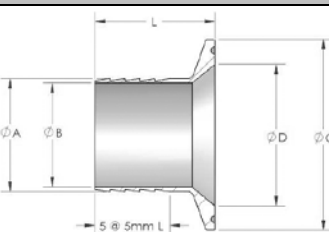
* Ø intérieur contre-ferrule

* Inside Ø mating

TYPE	CLAMP			
Filetage BSP.P	1/4" G	1/2" G	1/4" G	1/2" G
Ø C (mm)	50.5	50.5	50.5	50.5
Ø D * (mm)	22.0	22.0	35.0	35.0
L (mm)	25	25	25	25
Poids (kg)	0.12	0.11	0.11	0.09

ADAPTATEURS CANNELES - HOSE TAILS

13051 - 13052 - 13053

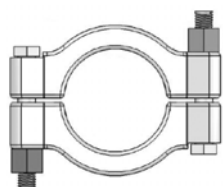


- Pour raccordement avec un flexible
- Construction inox 316 L (usiné dans la barre)
- Rugosité Ra ≤ 0.8 µm

- To allow clamp flange to be connected directly to a flexible piece or hose
- Manufactured from 316 L bar stock
- Surface finish ≤ 0.8 µm

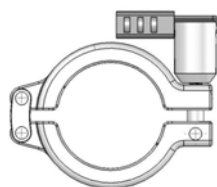
Ferrule Réf.	DN 10 13052-10				DN 15 13052-16				DN 20 13052-20				1/2" 13051-10			3/4" 13051-16			1" 13053-22				1-1/2" 13053-35			
Tuyau	1/4"	3/8"	1/2"	3/4"	1/4"	3/8"	1/2"	3/4"	1/4"	3/8"	1/2"	3/4"	8x5	14x11	16x13	8x5	14x11	16x13	8x5	14x11	16x13	22x19	8x5	14x11	16x13	22x19
Ø A (mm)	6.4	9.5	12.7	19.0	6.4	9.5	12.7	19.0	6.4	9.5	12.7	19.0	8.0	14.0	16.0	8.0	14.0	16.0	8.0	14.0	16.0	22.0	8.0	14.0	16.0	22.0
Ø B (mm)	3.4	6.5	9.7	16.0	3.4	6.5	9.7	16.0	3.4	6.5	9.7	16.0	5.0	11.0	13.0	5.0	11.0	13.0	5.0	11.0	13.0	19.0	5.0	11.0	13.0	19.0
Ø C (mm)	34.0	34.0	34.0	34.0	34.0	34.0	34.0	34.0	34.0	34.0	34.0	34.0	25.4	25.4	25.4	25.4	25.4	25.4	50.5	50.5	50.5	50.5	50.5	50.5	50.5	50.5
Ø D (mm)	10.0	10.0	10.0	10.0	16.0	16.0	16.0	16.0	20.0	20.0	20.0	20.0	10.0	10.0	10.0	16.0	16.0	16.0	22.5	22.5	22.5	22.5	35.0	35.0	35.0	35.0
L (mm)	40	40	40	40	40	40	40	40	40	40	40	40	32	40	40	32	40	40	40	40	40	40	40	40	40	40
Poids (kg)	0.04	0.04	0.04	0.04	0.04	0.04	0.04	0.04	0.04	0.04	0.04	0.04	0.02	0.02	0.02	0.02	0.02	0.02	0.02	0.02	0.02	0.02	0.08	0.08	0.08	0.09

COLLIERS SPECIAUX - SPECIAL CLAMP RINGS



Collier inox 304 ou 316
 écrou laiton (inox sur demande)
 Du 1/2" au 8.5/8"
 (= bride ext. 25.4 à 233)
 Ps jusqu'à 75 bar (selon Ø) à 150°C

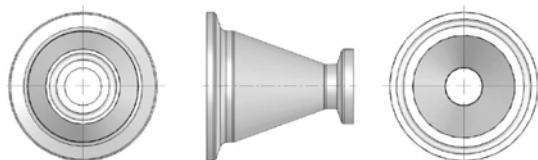
Collier haute pression - Heavy duty clamp



Collier avec écrou de sécurité et cadenas [système breveté]
 Lockout safety clamp with extended shrouded domed nut for padlocking

Collier cadenassable - Lockout safety clamp

REDUCTIONS CLAMP - CLAMP REDUCERS



Construction inox 316 L
 Ra standard ≤ 0.8 µm
 Option Ra 0.6 ou 0.4 et électropolissage
 Dimensions standards : BS4825, ISO 1127 & BPE
 Autres dimensions sur demande